

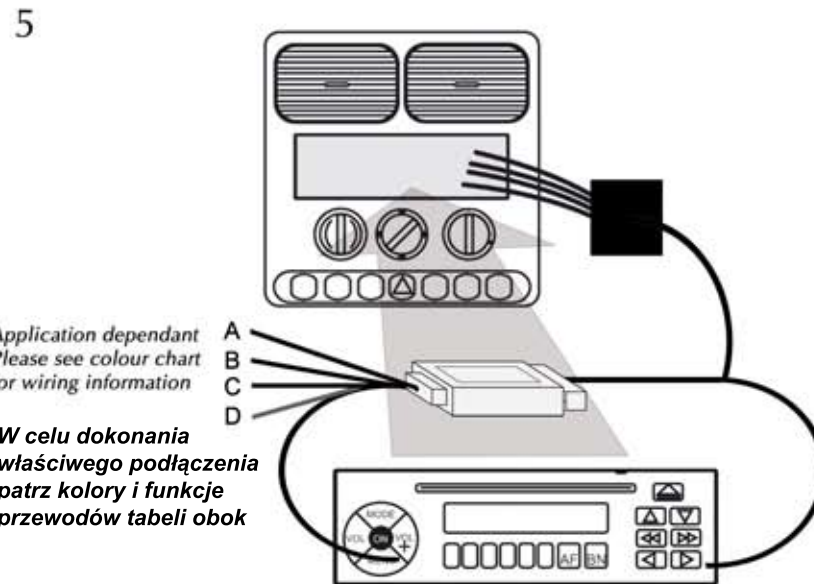
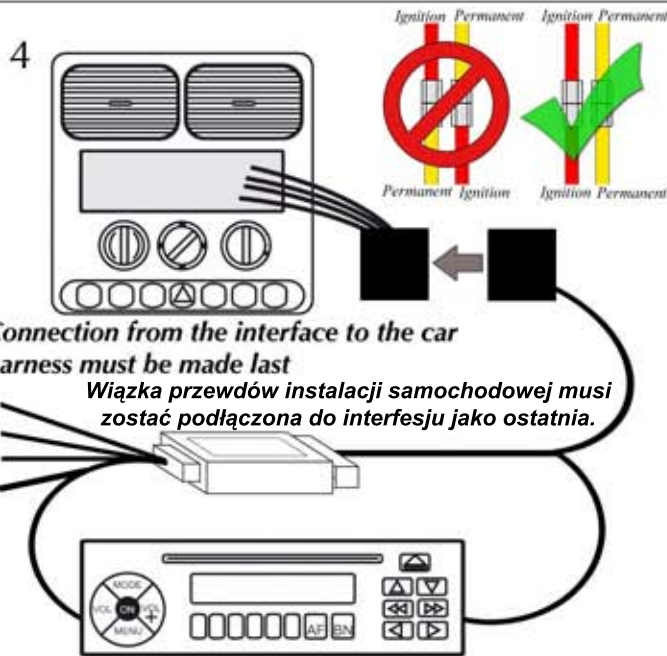
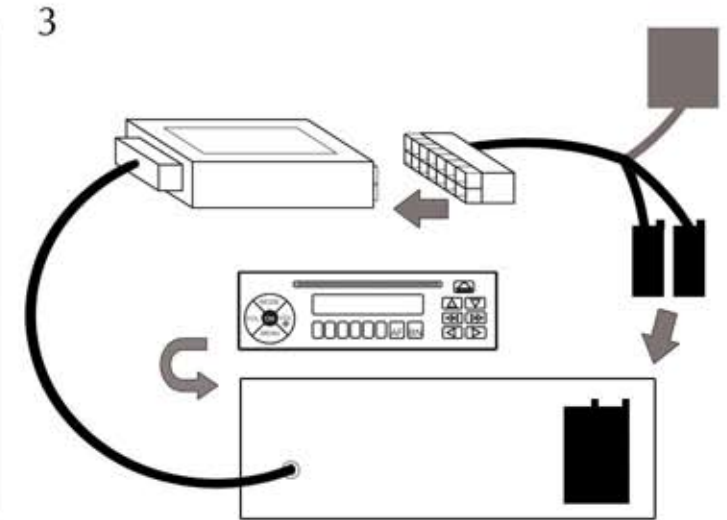
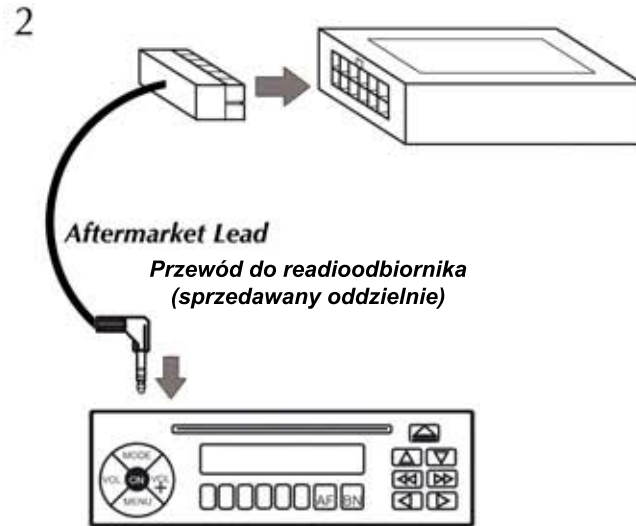
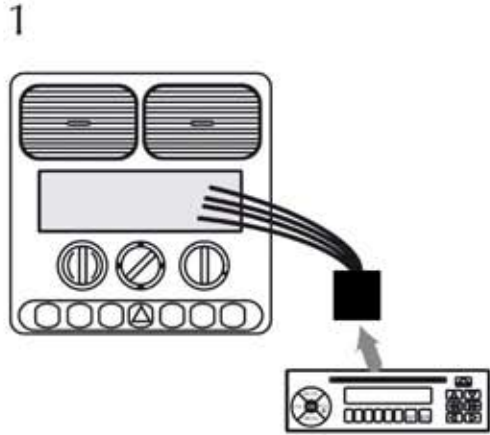
Installation Guide

Steering wheel control Interface

Instrukcja instalacji

Interfejs do sterowania z kierownicy

CTSSA001 - Saab 9.3 2008>



A Pink Wire	= Speed Pulse
B Green Wire	= Park Brake
C Purple/White Wire	= Reverse
D Blue/White Wire	= Amp Remote

Kolor przewodu	Funkcja
A - różowy	= prędkościomierz
B - zielony	= hamulec ręczny
C - fioletowy/biały	= czujniki cofania
D - niebieski/biały	= ster. wzmacniaczem