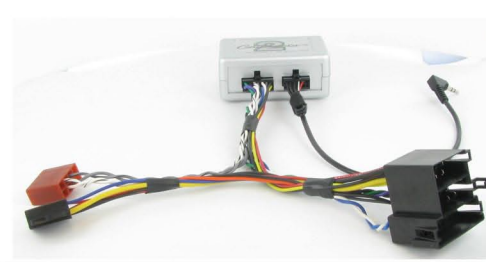


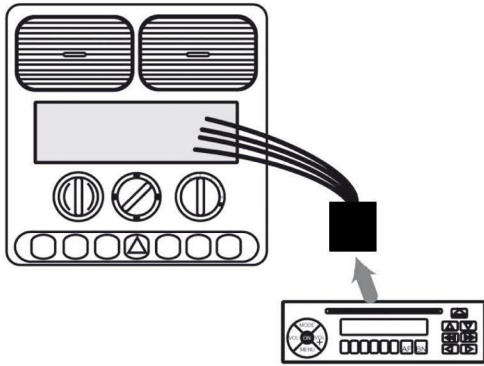
Installation Guide

Steering wheel control Interface

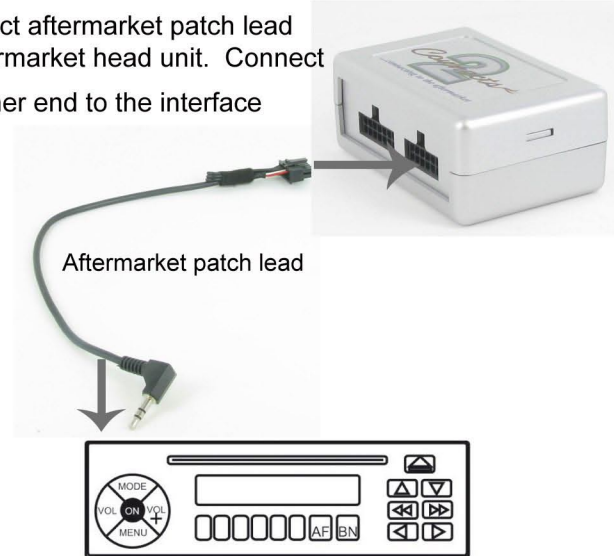
CTSHY006
CTSKI003



1



2 Connect aftermarket patch lead to aftermarket head unit. Connect the other end to the interface



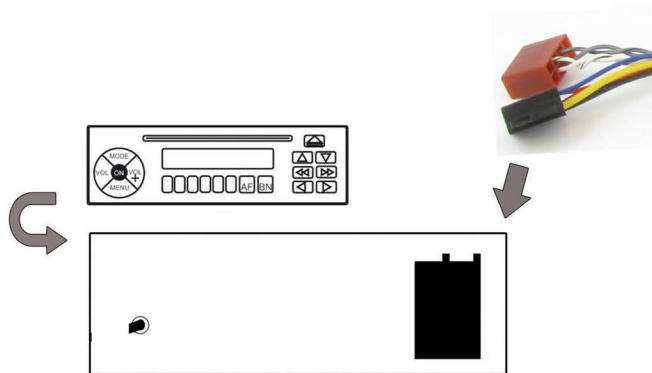
3

Connect the 14 way connector to the interface



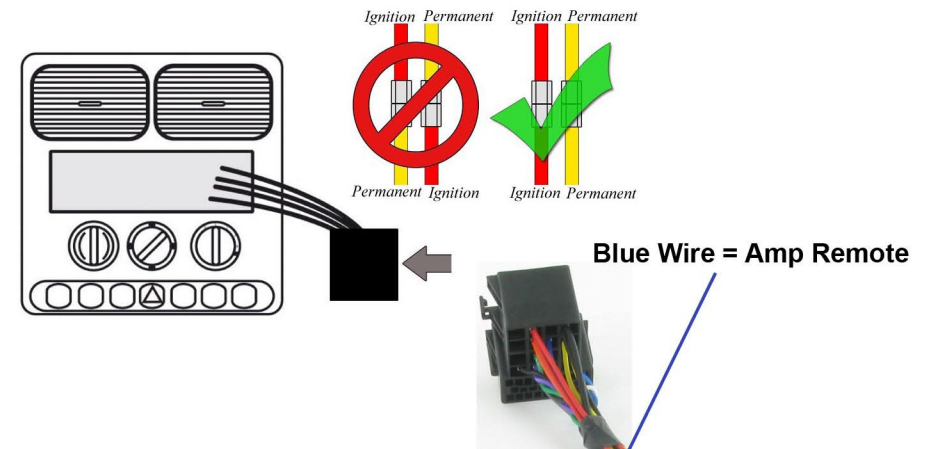
4

Connect the power and speaker ISO plugs to the aftermarket head unit



5

Finally, connect the female ISO and the mini-ISO plugs to the corresponding connectors in the vehicle



User Guide

Steering wheel control Interface

CTSHY006 - Hyundai ix35 09> Amplified
CTSKI003 - Kia Sorento/Ceed 09> Amplified



To adjust Fader:

1. Press and hold SOURCE button on the steering wheel for 10 seconds. The audio will mute when the fader menu has been entered.
2. To adjust the fader, use the track up and down button on the steering wheel.
3. To exit the fader menu, press the SOURCE button briefly. Exit from this mode will be confirmed by the audio muting twice. The steering wheel buttons will revert back to normal functions.